

UHD Mobile Receiver



LDA1100/1200

ATSC 3.0
ADVANCED TELEVISION
SYSTEMS COMMITTEE

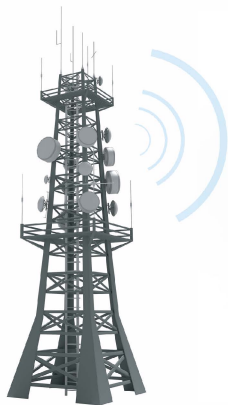
- RF Input : Terrestrial 54MHz~806MHz
- Input format : ATSC 3.0 (ROUTE, MMTP)
- Interface : USB 2.0 / 3.0
- Powered by USB
- Supported OS : Android, Linux, Windows
(A device driver is provided for each OS.)
- ATSC 3.0 middleware supported (optional)

LowaSIS



Product Concept

ATSC 3.0
Broadcasting



ATSC 3.0 Dongle

HD/UHD Display



HD/UHD Display



UHD Display

Specification

Specifications

RF Standard	ATSC 3.0
RF input interface	50Ω (MCX type)
Antenna	Mono pole Type (Gain : Approx. 0.9dB)
Product Dimension	100 x 30 x 11(mm)
RF Frequency	Terrestrial 54MHz~806MHz
Power Consumption	1.8W (5Vdc)
Weight	27g



Lowasis Inc.
A-1411, H Business Park, 25 Beobwon-ro
11-gil, Songpa-gu, Seoul, 05836, Korea
Tel : +82-2-2088-7110
E-mail : sales@lowasis.com

Lowasis USA
12145 Mora Dr. STE 13, Santa Fe Springs,
CA 90670
Tel : 1-657-231-6922
E-mail : chrislee@dsconverter.com